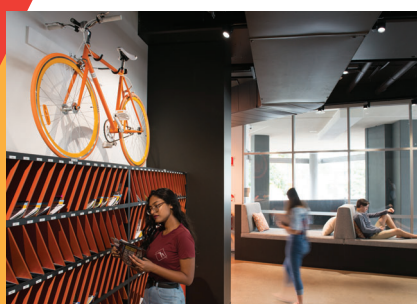
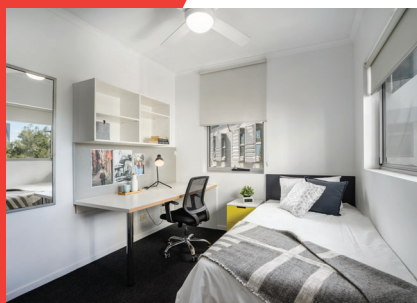


Accommodation  
Options

## Brisbane Student Residence



## Iglu Kelvin Grove

**Placement Fee** **\$300**

**Weekly Fee** **\$360**

**Cleaning Fee** **\$200**

*Accommodation fees are charged according to calendar year and 2025 fees may change. Impact will issue an updated offer letter reflecting these changes at our earliest opportunity.*

### Location

62 Blamey Street  
Kelvin Grove QLD 4059

### Minimum Stay

5 weeks

### Check-in/out

Check-in on Sunday, check-out on Saturday.  
(For check-in earlier than Sunday, student will be charged for the whole week. No daily rate available.)

Check-in and Airport Pick-Up bookings not available from  
21 Dec 2024 to 4 Jan 2025.

For more information:

**homestay@impactenglish.edu.au**

[www.impactenglish.edu.au](http://www.impactenglish.edu.au)

[Facebook.com/ImpactEnglishCollege](https://Facebook.com/ImpactEnglishCollege)

[Instagram.com/ImpactEnglishCollege](https://Instagram.com/ImpactEnglishCollege)



CRICOS CODE 02995B

## How to get to the college

There is a direct bus from Kelvin Grove (the bus stop is a 7-minute walk from Iglu) that will drop you a short walk from campus. The total commute is approximately 22 minutes.

## Meals

Complimentary weekday breakfast provided by Iglu.

## Your room

You will have your own private bedroom in a 5-bedroom share apartment. Your bedroom will have a king-size single bed, study desk, chair, pin board, bookshelf. There is a wardrobe / hanging space and mirror. There are two shared bathrooms. The apartment features a shared kitchen with microwave, cooktop and refrigerator, and shared living space with seating, dining table and television. All utilities (electricity, water & gas) are included, and linen will be provided.

## Facilities in the building

Unlimited high-speed WiFi, 24-hour security and support, gym and games area, onsite laundry, in-house reception, study and BBQ areas, TV and lounge area, bicycle storage and vending machine.

## Terms and conditions

A full refund of the accommodation fee will be given if a booking is cancelled more than 30 days before arrival. No amendments or cancellations can be made within 30 days prior to arrival and after commencement of the stay. Students who choose to leave will not receive a refund for the term they applied for. Students can apply for the minimum stay of 5 weeks and extend their stay. Extension of the stay is subject to availability.

